

# CLINIQUE

---

## Honey goes nude.

A surprisingly flexible  
nude in two beloved  
Clinique formulas

**New**  
Nude Honey



# Introducing Nude Honey Almost Lipstick.

**Available as from beginning of  
August 2025**

The perfect mix of warm and cool pigments that blend with your own lip tone to create a nude unique to you.

**It's the only nude you'll need.  
What will it look like on you?**



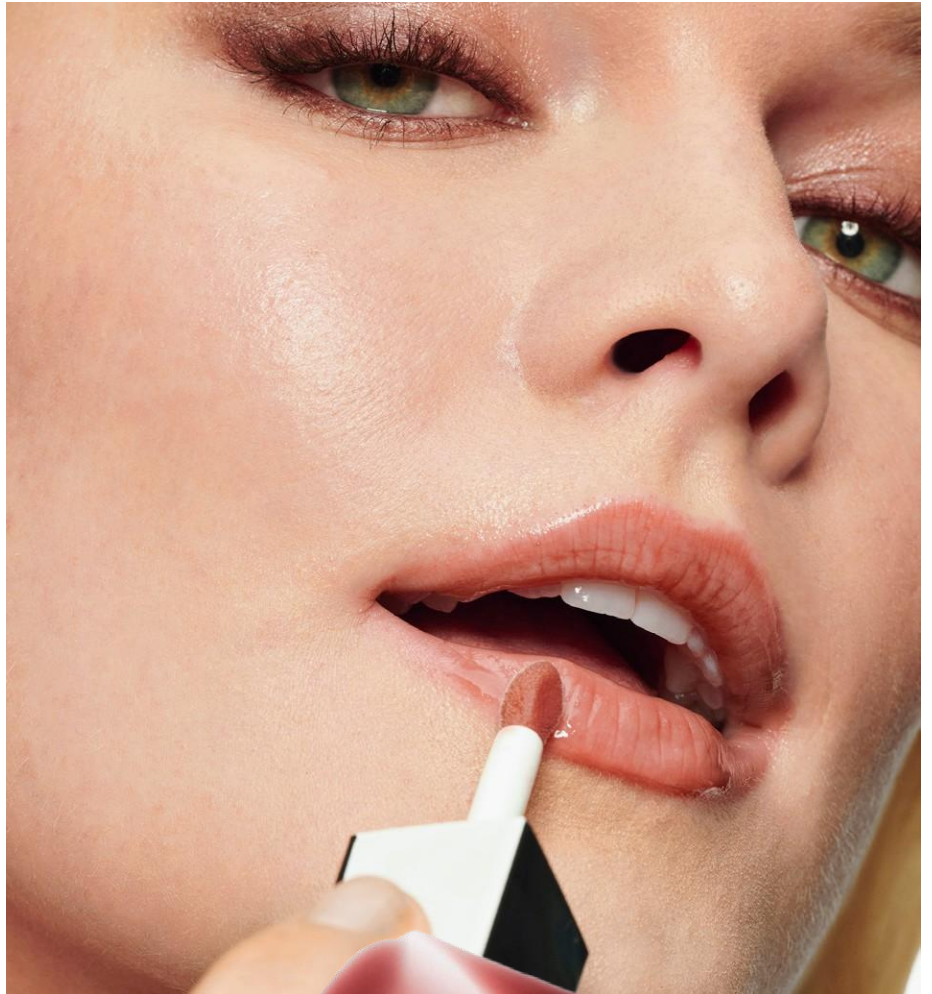
## **The formula.**

Iconic balm-meets-lipstick formula that goes on sheer and layers for more intensity. Emollient-rich formula with 95% conditioning ingredients. Wear alone, or over lip liner or other lipstick. It's very forgiving—you don't even need a mirror to put it on.

# Introducing Nude Honey Clinique Pop™ Lip + Cheek Oil

**Available as from Mid-August 2025**

A two-in-one tinted oil that delivers a dewy pop of Nude Honey for lips and cheeks. Gives both a light wash of color and a natural, dewy look.



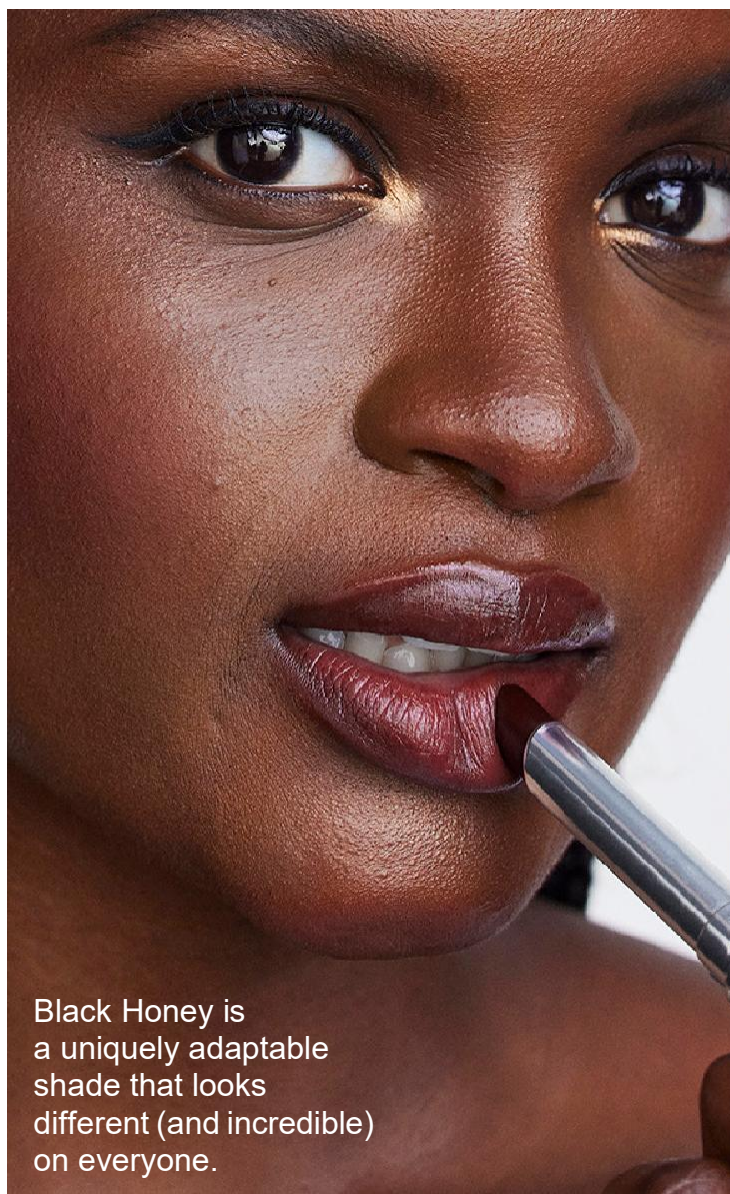
## **The formula.**

A nourishing blend of safflower oil, jojoba oil, olive oil, castor oil and sunflower seed oil helps condition lips. Doubles as a dewy blush for cheeks.





## What's the difference between Black Honey and Nude Honey?



Black Honey is a uniquely adaptable shade that looks different (and incredible) on everyone.



Nude Honey blends with your lips to create a nude shade unique to you.

**Both products are available at all points of sale.**

**Suggested Retail Price :**

Nude Honey Almost Lipstick €29

Nude Honey Clinique Pop Lip + Cheek Oil €30,50